

the historic murals of

downtown



Midland

Ontario's premier mural community



# Walking Tour



The Historic Murals of Downtown Midland

# #1 - Rotary Mural



Originally painted by Fred Lenz in 1994 and redesigned by Ruth Hurdle in 2008. It is a collage of the tourist attractions, which promotes the spirit of Midland. In honour of the late Fred Lenz, an image of him can be seen painting a scene in the bottom left corner of the mural.

---

## The Historic Murals of Downtown Midland



## #2 – Runners of the Woods



On the laneway beside the Southern Georgian Bay Chamber of Commerce building, this mural is actually entitled "Coureurs de Bois" which translates as "Runners of the Woods" – Shows fur traders meeting and working with the Hurons.

---

The Historic Murals of Downtown Midland

# #3 – A Day for Mary



This reproduction painting is a large version of an original oil painting done by Norman Rockwell. It was commissioned in the late 1920's by Pratt and Lambert.

---

The Historic Murals of Downtown Midland



# #4 – Brebeuf Lighthouse



This is a rendering of the Brebeuf Lighthouse originally built in the 1900's. It was built to guide ships on course from Giant's Tomb to the channel serving Midland Bay.

---

The Historic Murals of Downtown Midland

# #5 - Saw Mill



This mural depicts a typical sawmill of the 1900's. As was noted from previous murals, the lumber industry played a big part in the growth of the Midland area.

---

The Historic Murals of Downtown Midland

# #6 – Woolen Mill



With this mural you will see a view of a woman working away on an early model sewing machine while her cats look out the window across the road at the Woolen Mill Store.

---

The Historic Murals of Downtown Midland



# #7 – Midland Railway Corporation



Capturing the Midland Railway as it was – The station was officially opened for commercial and passenger use in 1879 and existed until 1998.

---

The Historic Murals of Downtown Midland

# #8 – Midland Railway Corporation



Farther along the wall a second mural shows the engine house. The men are repositioning the turntable to allow the locomotive to leave the yard.

---

The Historic Murals of Downtown Midland



# #9 – View of Midland Harbour



Based on a photograph taken by J.W. Bald around 1910 –  
Reveals how much the local resident's lives centered on the  
Midland Harbour in the early 1900's.

---

The Historic Murals of Downtown Midland

# #10 – Livery Stables



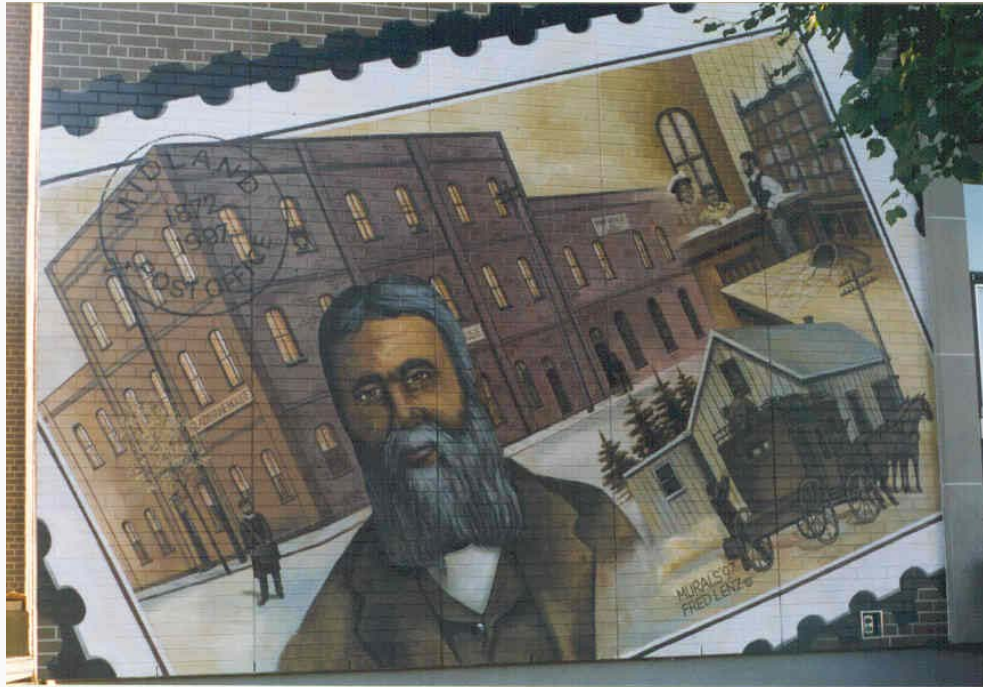
Depicting the early years of a 20<sup>th</sup> Century livery stable and the introduction of the automobile when it started taking over traditional transportation.

---

The Historic Murals of Downtown Midland



# #11 – Midland Post Office and Postmaster



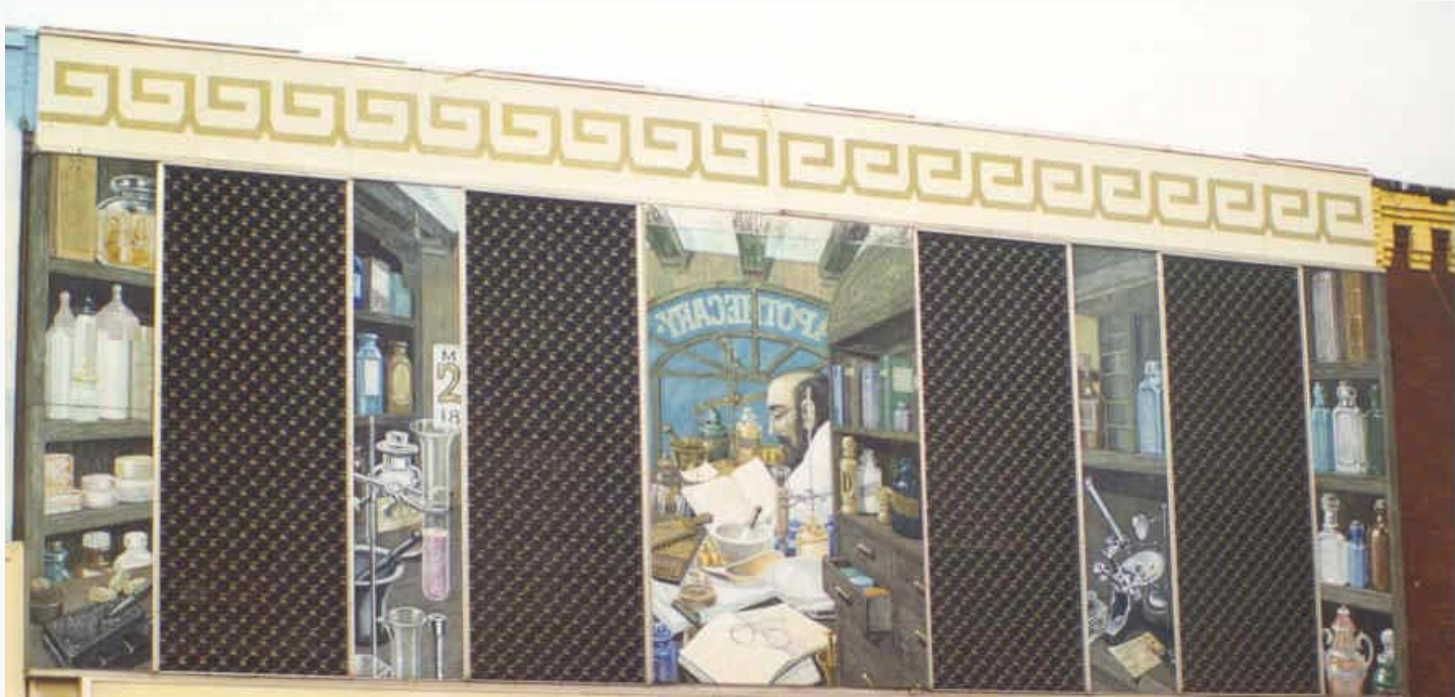
Created to commemorate the Midland Post Office's 125<sup>th</sup> anniversary. The mural views as a postage stamp that includes a scene of Downtown Midland in the era of 1885. The gentleman seen in the foreground is Midland's first postmaster Thomas Gladstane.



---

The Historic Murals of Downtown Midland

# #12 - Druggist



A view into an old time apothecary shop. In those days druggists were virtually chemists mixing their own cures as outlined by your physician. Medicines came in the form of powders, drinks and mixtures.

---

The Historic Murals of Downtown Midland



# #13 – The Return of the Trumpeter Swans



This nearly extinct native species has been reintroduced at the Wye Marsh Wildlife Centre.

---

The Historic Murals of Downtown Midland

# #14 – The Beauty Salon



An old time beauty salon. Beauty salons were very popular in the 1940's, all showcasing the most current fashion trends.

---

The Historic Murals of Downtown Midland



# #15 – James Playfair Shipyard



This mural shows a portrait of James Playfair, who was a successful lumberman, turned to shipping in 1896. In 1915 the Midland Shipbuilding Company started to build freighters as depicted in this mural.

---

The Historic Murals of Downtown Midland

# #16 – Playfair Lumber Mill in 1890



This mural depicts the Playfair Mill, which was the first lumber mill in the area built in 1871. James Playfair and D.L. Hoyt purchased the mill in 1886 and turned it into a profit-making venture until it was destroyed by fire in 1916.

---

The Historic Murals of Downtown Midland



# #17 – H.M. Schooner Bee



A working replica of the original Bee, which was built in 1817 and sailed until 1831. This replica currently sails the waters of Georgian Bay from King's Wharf at Penetanguishene's Discovery Harbour.



---

The Historic Murals of Downtown Midland

# #18 – The Water Fountain



Resembles the exact corner in the mid 1920's. You can see a fountain where your horse could drink, across the street the Georgian Hotel, and a permanent stop for the Penetanguishene Coach – known today as the PMCL Bus Lines.

---

The Historic Murals of Downtown Midland



# #19 – S.S. Lemoyne



The S.S. Lemoyne was built in 1926 and was the largest bulk carrier on the Great Lakes until the 1950's, measuring 663 ft. long, 70 ft. wide, and 73 ft. deep.

---

The Historic Murals of Downtown Midland

# #20 – Fishing in Midland Harbour



The mural depicts Midland's bustling harbor exemplifying one of the many passenger and packet steamers that occupied the waters of Georgian Bay at the turn of the century.

---

The Historic Murals of Downtown Midland



# #21 – Benjamin Moore Paints



This mural is a reproduction of the very first in-store advertisement for Benjamin Moore Paints. This advertisement first appeared in 1919 and featured the tagline "Quality Forever-Moore".

---

The Historic Murals of Downtown Midland

# #22 – The Wye Marsh



This mural depicts a view of the Wye Marsh at sunset, looking towards the Martyr's Shrine, which can be seen in the background.



---

The Historic Murals of Downtown Midland



# #23 – Canadian Guides



This mural commemorates the Girl Guides of Canada and Canadian Guiding – The original mural was actually a “Welcome” sign to Downtown Midland till 1996.

---

The Historic Murals of Downtown Midland

# #24 – Local Photographers



Portraits of two famous photographers, key in recording Midland's History. At the left is Budd Watson and to the right is J.W. Bald. Most of the murals are based upon photographs taken by J.W. Bald in the 1900's.

---

The Historic Murals of Downtown Midland



# #25 – Bourgeois Motors Dealership through the Years



Shows the dealership at different times in history. It started off as a gas station and garage in the early years and grew into a successful Ford Dealership.

---

The Historic Murals of Downtown Midland

# #26 – Rediscovery of Sainte-Marie



Appearing to be a hole in the wall, “Rediscovery of Sainte-Marie” depicts the excavation of the southwest bastion – Based on a sketch originally created in 1885 by Father Felix Martin.

---

The Historic Murals of Downtown Midland



# #27 – The Cleaners

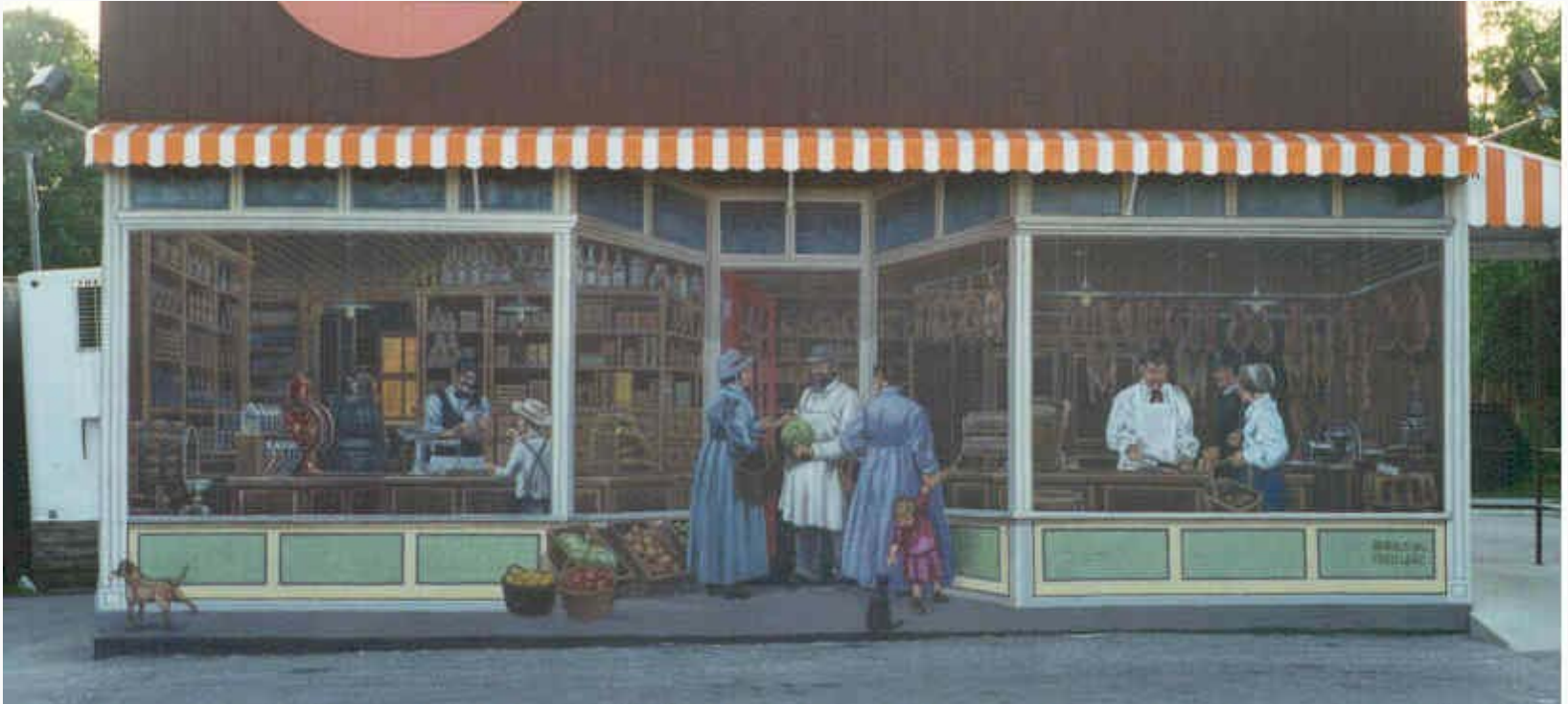


This mural shows cleaners in the early 1920's. The owner of the Laundromat is seen loading freshly cleaned clothes into his truck for delivery to his customers.

---

The Historic Murals of Downtown Midland

# #28 – Butcher Shop



This mural is a glimpse of a butcher shop from long ago. Inside you can see the butchers providing fresh cuts of meat that were common for that period in time.

---

The Historic Murals of Downtown Midland



# #29 – The Playfair Preston Company



The original superstructure is portrayed in the last mural. A portion of the third story collapsed in 1928 during the busy Christmas shopping season. A local demolition company removed the remaining portion, of the third story after the Second World War.



---

The Historic Murals of Downtown Midland

# #30 – The Playfair Preston Company



This set of murals takes us back in time revealing what this building was like at that time. This general store and wholesale business operated from 1895 into the early 1950's.

---

The Historic Murals of Downtown Midland



# #31 – Winter at the Harbour



The first in this set is our most recent mural, entitled “Winter at the Harbour”, this is our very first winter scene mural. It is a view of the Midland Harbour in the winter of the 1920’s and 1930’s. It shows workhorses, using a device to cut the ice to allow the ships to come closer to the shore.



---

The Historic Murals of Downtown Midland

# #32 – Midland Harbour & Pier



The second in this set, this mural shows the Midland Harbour and Pier as it was in the early 1900's.

---

The Historic Murals of Downtown Midland



# #33 – Great Lakes Cruises



Last in this set of three, this mural depicts the interest in the Great Lake cruises of the 1920's and 30's. The vessels would pick up passengers at major Great Lake cities and take them to quieter and more picturesque waters. The two cruise ships seen in the mural belonged to the Detroit based Georgian Bay Lines.



---

The Historic Murals of Downtown Midland

# #34 – Huron Native and Jesuit Priest at Sainte-Marie



This mural is the largest outdoor historic mural in North America, it measures 80 feet high by 250 feet wide. It depicts a Jesuit Priest and a Huron Native gazing from a hilltop over the Wye Valley and into the nearby village of Saint-Marie, as it would have appeared in 1640.



---

The Historic Murals of Downtown Midland



# Connect With Us!

**[www.downtownmidland.ca](http://www.downtownmidland.ca)**



**Downtown Midland**



**@MidlandBIA**



**Downtown Midland**



**Downtown Midland**



**DowntownMidland**



**Downtown\_Midland**



---

The Historic Murals of Downtown Midland